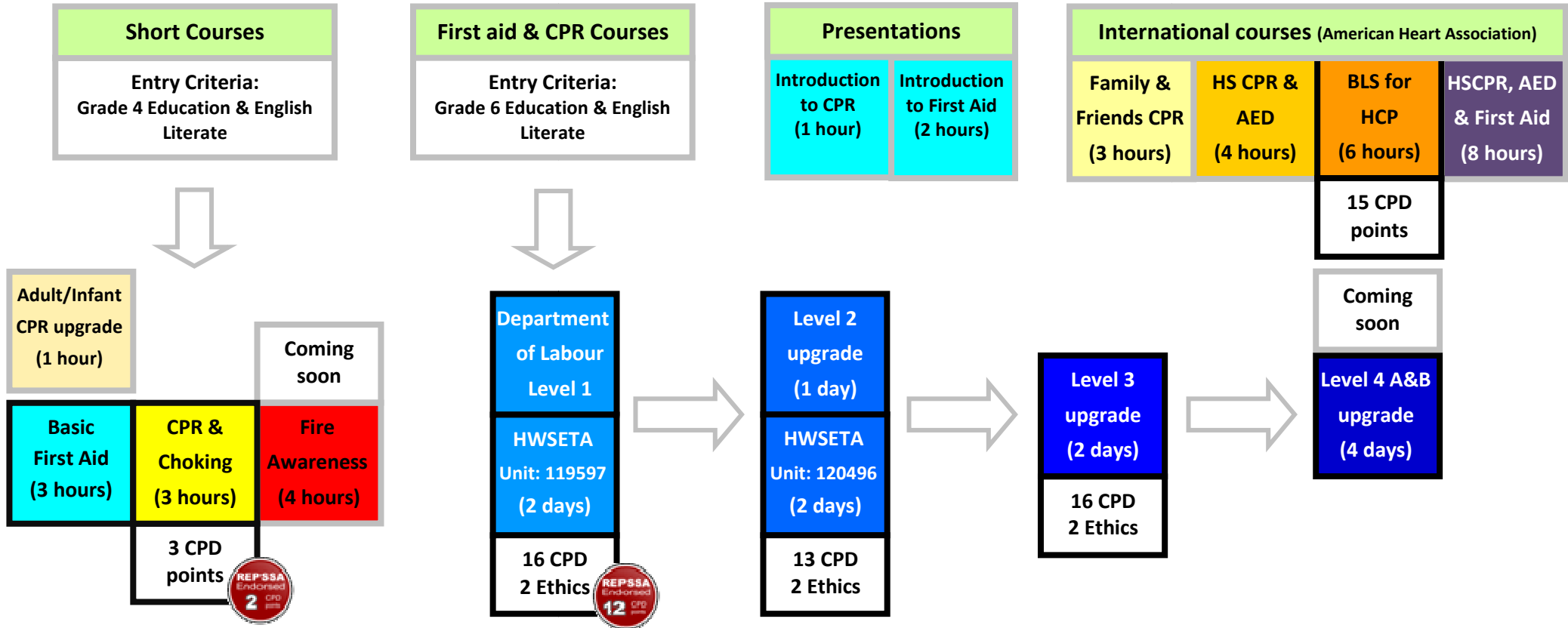


Course Flow

Contact us

Email: mail@pulsepoint.co.za
 Landline: 011 477 9999
 Fax: 086 551 9999
 www.pulsepoint.co.za



Approved for Health Professions Council of South Africa (HPCSA) CPD/CEU points.

Approved for Discovery Vitality Points.

- Grey Border: We can come to you. The more people on the course, the cheaper it is per person.
- Black Border: Same as Grey Border, but we also have public courses for you to join at a fixed price.
- CPD / CEU points are for people registered with the HPCSA. REPSA CPD points are labeled separately.
- Course Duration would be shorter for smaller groups & Entry Criteria are recommended guidelines.
- As always let us know if you have any questions or need any information.

© Pulse Point cc – 2007/151688/23 – November 2015
[Click here for the latest version](http://www.pulsepoint.co.za/Pulse-Point-Course-Flow.pdf)
www.pulsepoint.co.za/Pulse-Point-Course-Flow.pdf